

Specification for Fiber Patch cords/ Pigtail/ Adaptor

1. Can be used in High Speed fiber optic transmission networks.
2. Easy installation and handing and be suitable for modern communications such as DWDM.
3. Main Parts:

CONNECTOR PLUG:

Plastic house:ABS-FR
Insider tabs:ceramic

- 1) Type : LC;SC;
- 2) INSERTION LOSS : less than 0.3dB
- 3) RETURN LOSS : greater than 45dB
- 4) Repeat Connections : Insertion loss should not increase by more than 0.2dB during a test cycle of 500 repeat connections/disconnections.
- 5) Construction : High precision ferrule Zirconia /metal insert.
- 6) Polishing type : +APC/UPC

4. Packing & Identification:

Suitable packing is provided especially for handing the different length of the required patch cords.

5. Functional Qualification Tests(Optical and Mechanical performance)

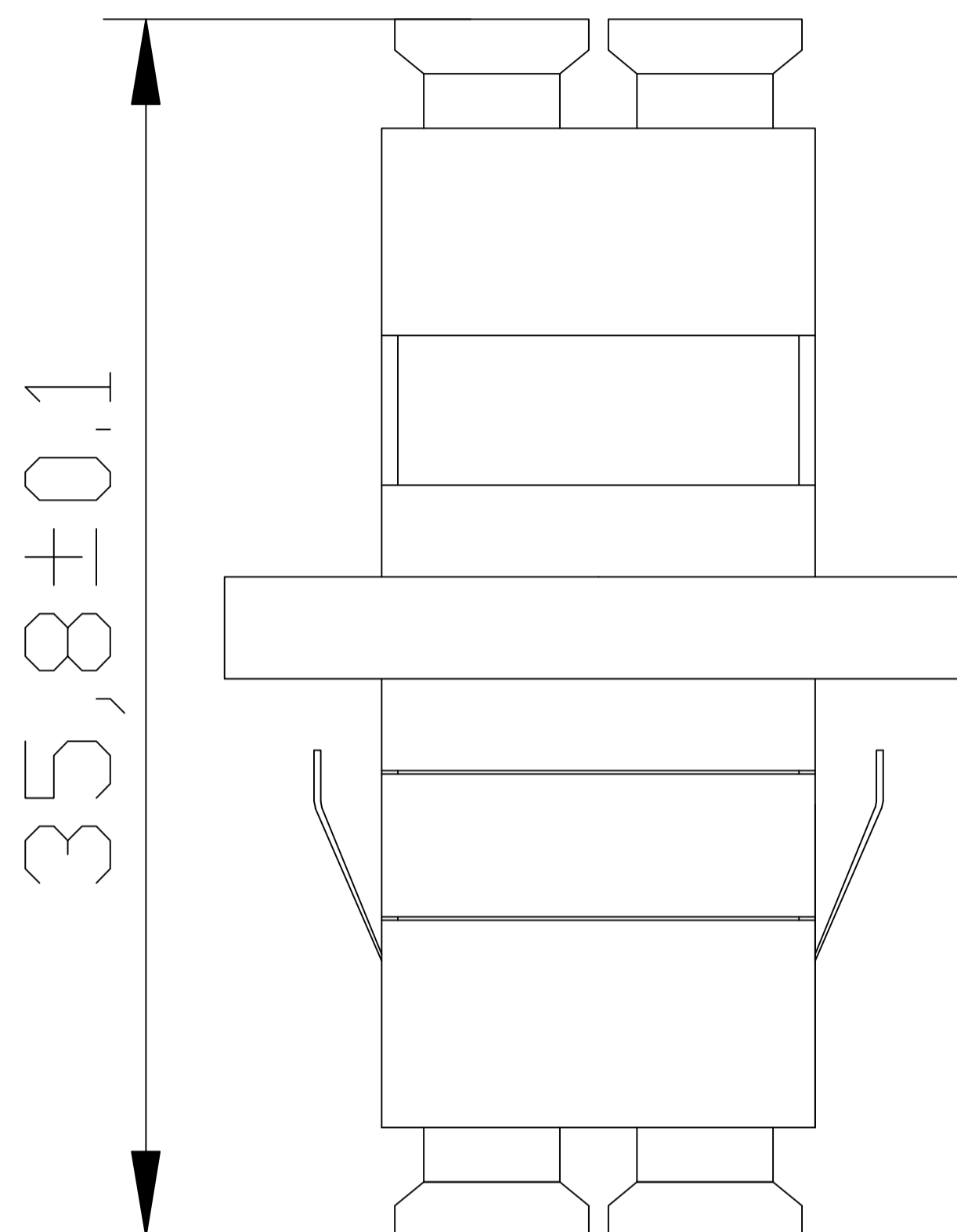
·Operating temperature: -10°C to 70°C

·Mating Durability:

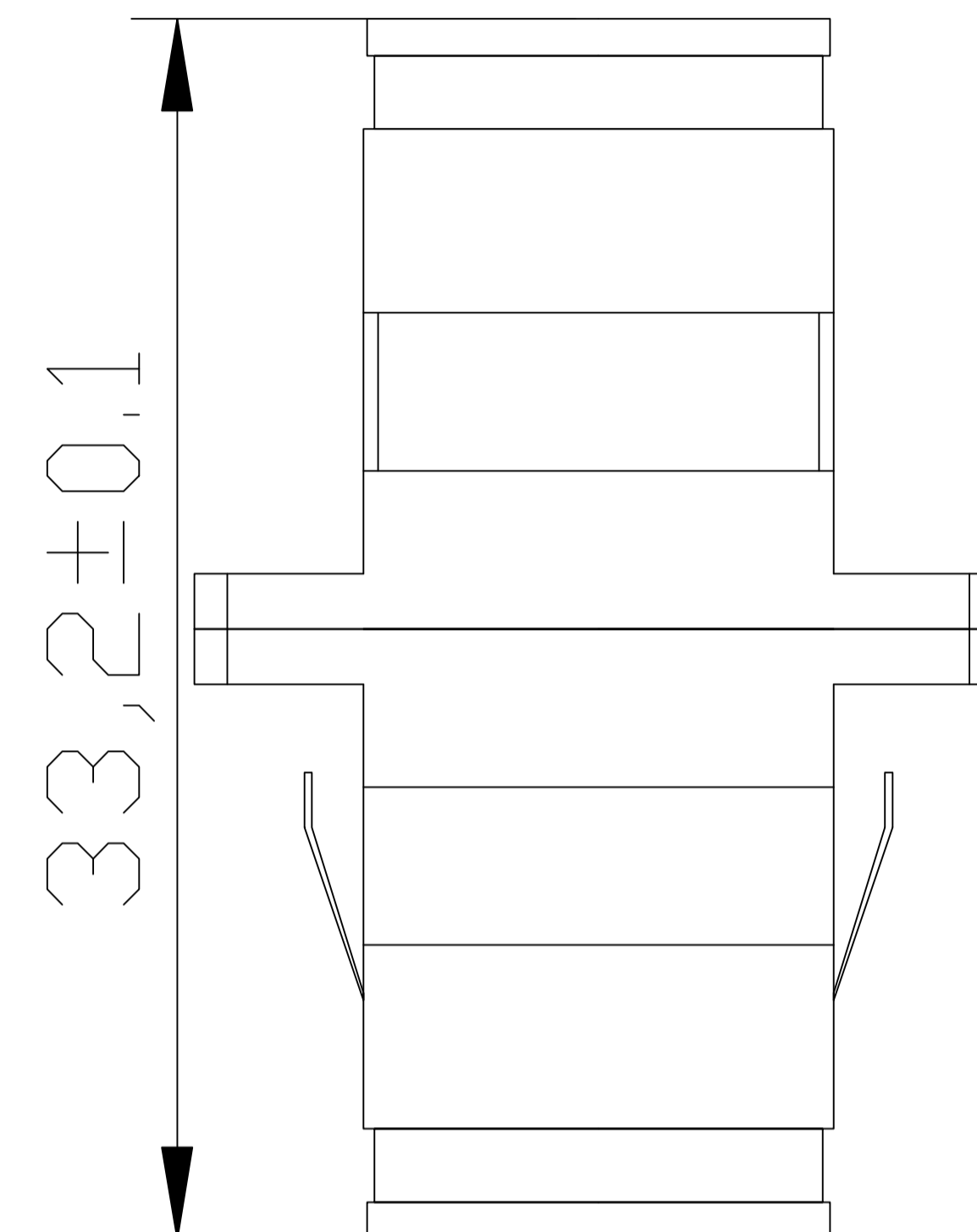
(Number of possible connections-disconnections)at least 500 times.

- 1.)Method : IEC 61300-2-2 set up like I.L.
- 2.)Requirement : Δ insertion loss ≤ 0.2dB during the test

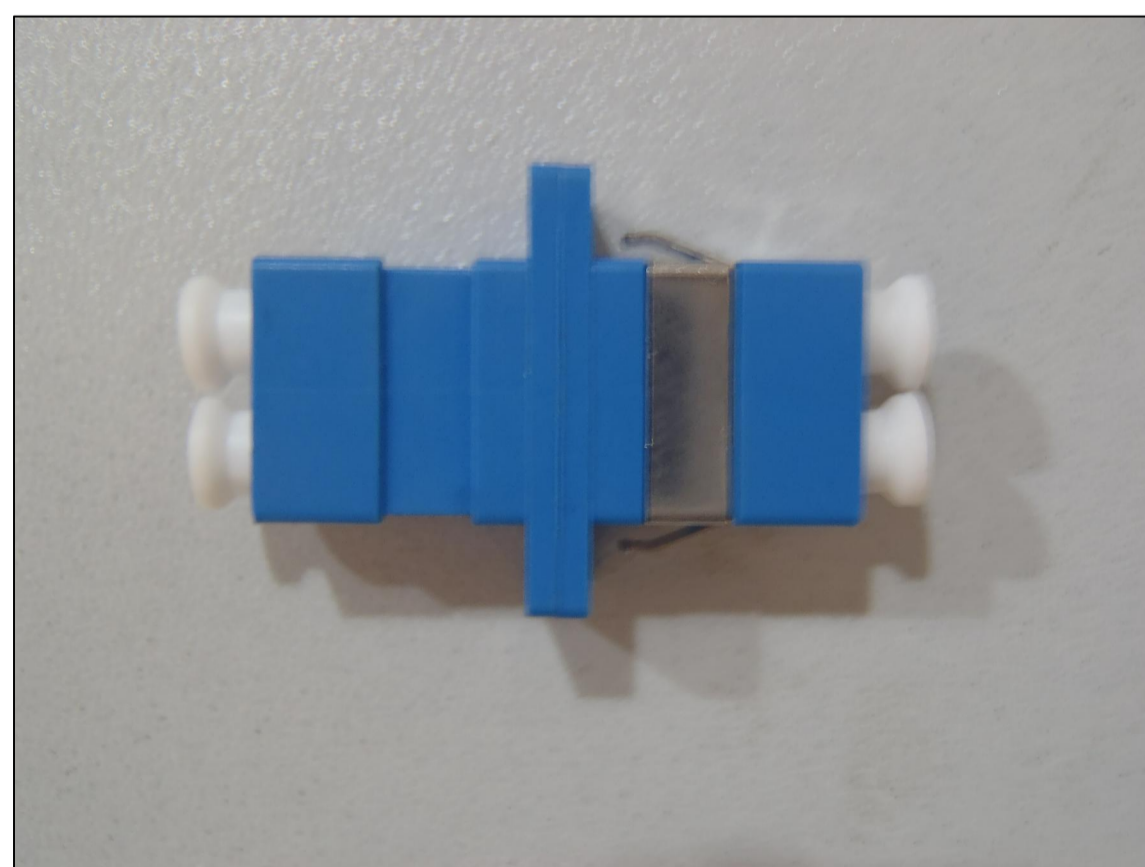
·Insertion loss:
The qualification of the offered patch cords in the technical evaluation is based on the standards IEC 61300-3-4 Method C for insertion loss measurement.



LC/PC-LC/PC



SC/APC-SC/APC



DRAWING NO:GT-30-01				PART NO:FP-XX/XX1Sxx	
DESCRIPTION: XX-XX, simplex, Singlemode,xx M					TOLERANCES UNLESS OTHERWISE STATED X.=+/-0.3 .X=+/-0.2 .XX=+/-0.1
DATE	14/09/04	SCALE	1:1	CUSTOMER PART NO:CM-GT-XXXX-xx	
SIZE	A4	DRAWN	QIBEN XIA	CUSTOMER DESCRIPTION: XX-XX, simplex, Singlemode,xx M	
UNIT	mm	VERIFY	JUSTIN		