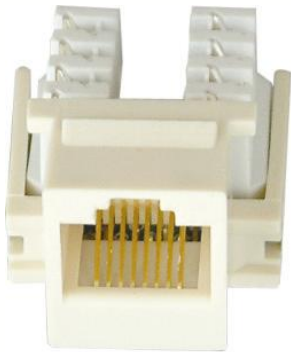
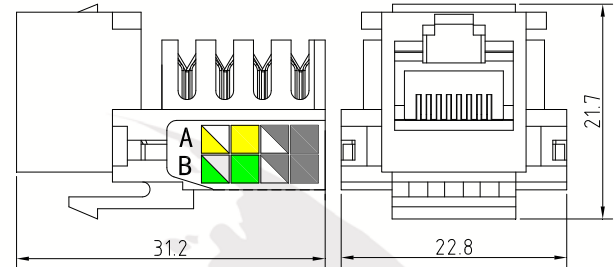


CAT5e KEYSTONE JACK

CNSFP4002-1



NSFP4002
CAT5E



Specifications

- Size: 22.8×21.7×31.2mm
- Color: Ivory
- Criteria: ISO/IEC11801
- Krone IDC
- CAT5e

Environment Characteristic

- Temperature: -20°C ~ +70°C
- Relative humidity: max75% at 20°C

Mechanical Performance

Material:

JACK: ABS

Gold pin: Sn6.5-0.1(Y)

thickness of gold coated: 6u"/15u"/30u"/50u"

Contact: Sn6.5-0.1(Y)

Thickness of silver coated: 0.5um

IDC: Copper conductor 0.4~0.7mm, max.

Connections>200 times

Sockets: max. Insertions>700 times

Electrical Performance

Contact Resistance (excluding body resistance)
 $\leq 5\text{m}\Omega$ (under normal air condition)

Insulation Resistance: $\geq 1000\text{M}\Omega$ (under normal air condition)

Dielectric intensity: DC 1200V, no spark over and fly arc in 1 min.