

CM ODF 144C TYPE B



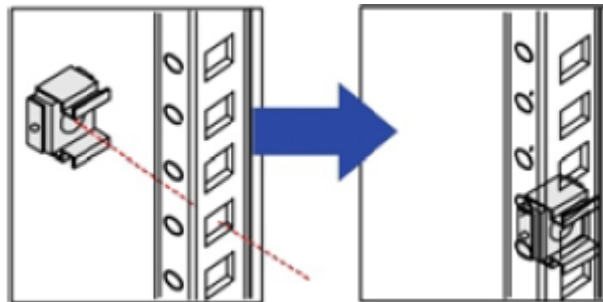
1. Security Notice

- ◆ Warning: The strong power of laser is harmful to human body, especially for eyes. Do not look at the end face of the pigtail or the connector with naked eyes.
- ◆ Do not bend the fibers excessively. The bending radius of the fiber should not be less than 30mm.
- ◆ Wear protective gloves when installing the product to prevent scratching of products and hands.

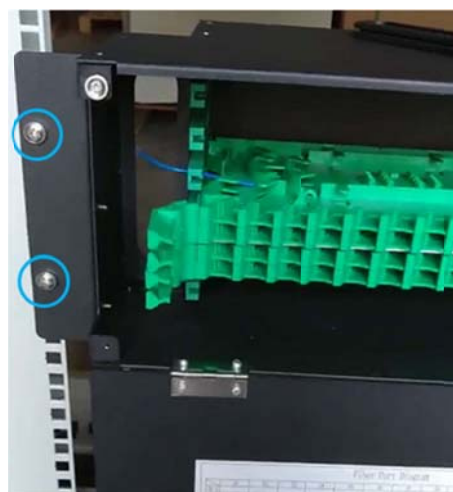
2. Installing tools

			
Marker	Diagonal Pliers	Tape Measure	Screwdriver
			
Dust-free Paper	Knife	Bottles of Alcohol	Fiber Stripper
			
Miller Stripper	Fiber Cutting Machine	Splice Machine	Loose Tube Stripper

3. Install the screws assembly to the rack from the back side according to the installation position of the ODFs.



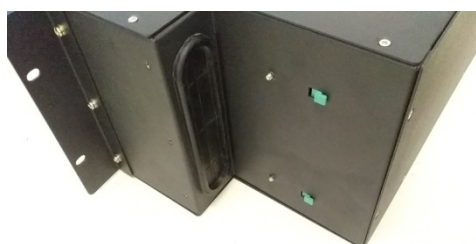
4. Install the ODFs onto the rack with M6 screws.



5. Strip the cable outer sheath according to required length during installation. Insert the fibers into a protection tube after cleaning. Lead the fibers into the protection loose tube until the protection tube reaches the stripping point. Then wrap and fix the stripping point with insulating tape. Fix the cable onto the stripping plate in cabinet with iron hoops.



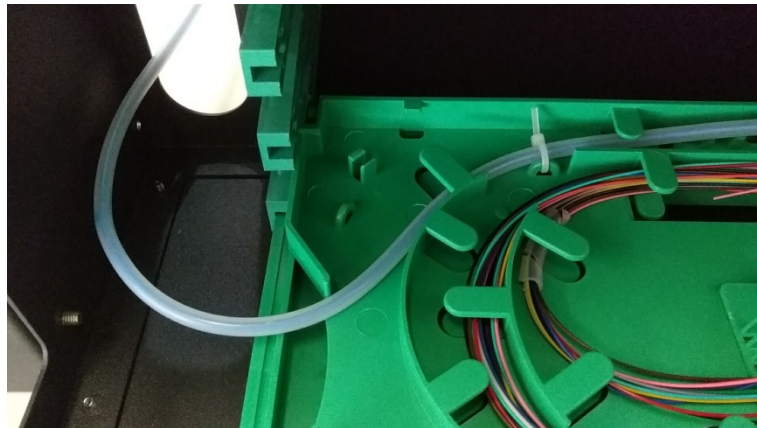
6. Insert fibers together with protection loose tube from the inlet cable holes on the left or right sides of ODF. Use screwdriver to poke a hole on rubber gland or just remove the rubber gland to insert the fibers with protection tube.



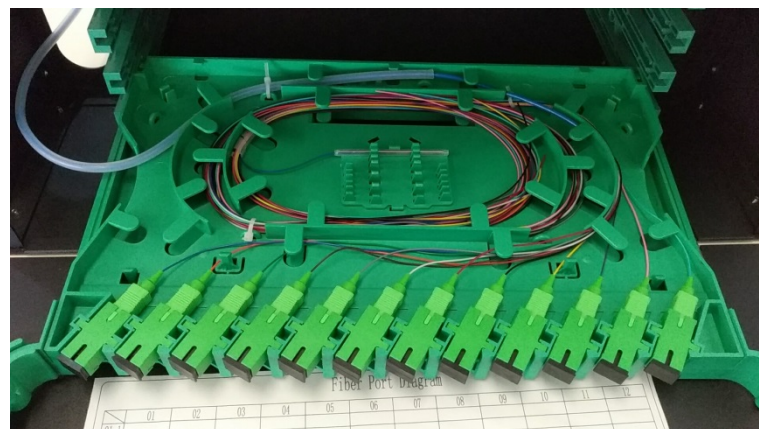
7. Open the front door of ODF and pull out the splice tray.



8. Remove the tray cover. Insert the fibers into the tray from the cable entrance on the left or right sides of the tray. Fix the protection tube with a cable tie.



9. Splice the fiber cable with pigtails in the tray. Insert the heat shrinkable protective tube into the slots in the middle of splice tray. Coil the redundant fibers in the splice tray.



10. After finishing splicing fibers and coiling the redundant fibers, make record on the fiber port diagram inside the front door and then push back the tray into ODF. Close the front door of ODF when all jobs are finished.

