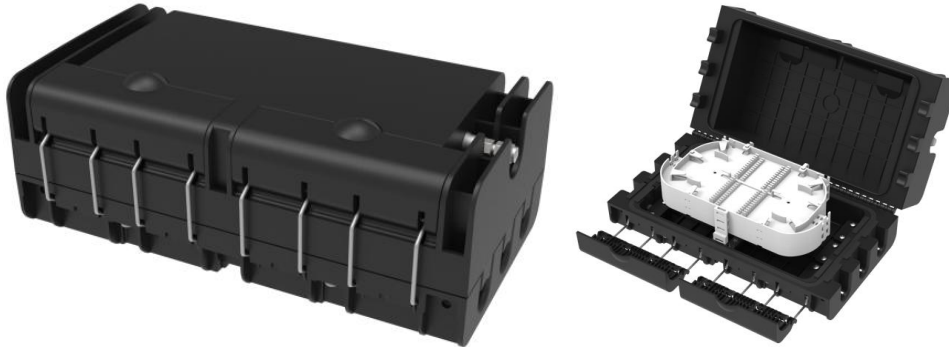


## INLINE TYPE FIBER OPTIC SPLICE CLOSURE CM027 (36C-48C-72C)



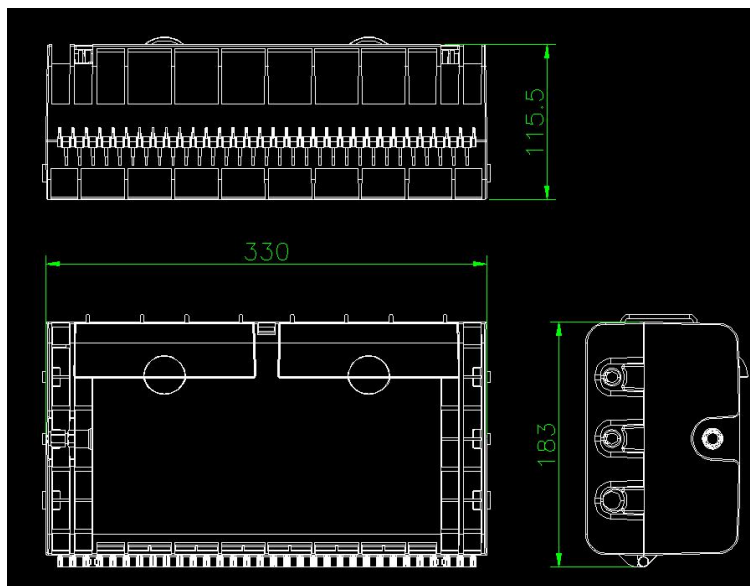
### Description:

CH027 is an inline type fiber optic splice closure for optical fiber splicing, cable protection. There is silicone sealing gasket between the cover and bottom, with fixing cable strengthen core parts .

### Specification sheet :

Model	CH027
Material	PP or HDPE
Dimension	330*183*115.5
Cable ports	6 ports , 3 in / 3out (4pcs $\Phi$ 8mm, 2pcs $\Phi$ 13mm)
Max capacity of splice tray	4 splice tray , each max capacity 48Fo
Max capacity	192Fo
Application	Outdoor aerial hanged , wall mounted , duct , buried
Net weight	2.5KG
IP Standard	IP65

### Dimension: (mm)



**Accessories List :**

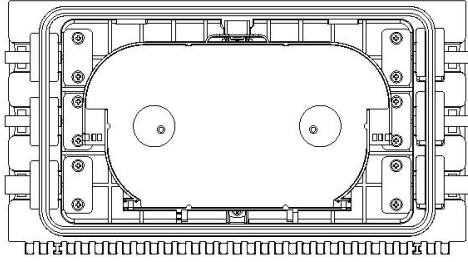
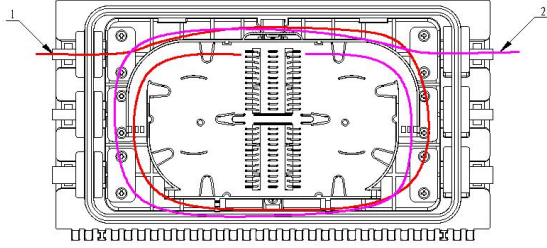
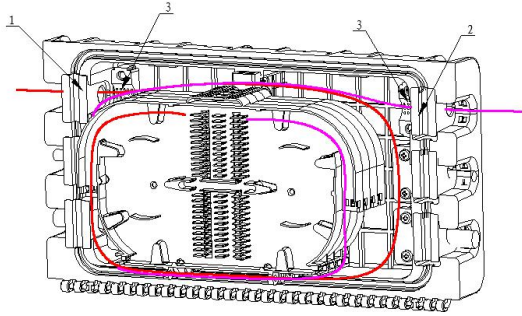
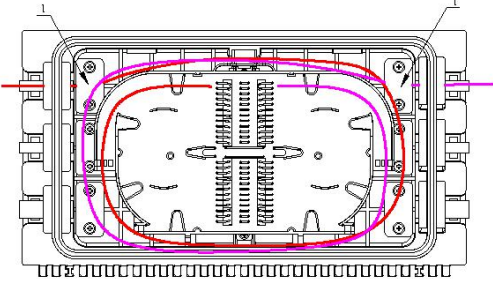
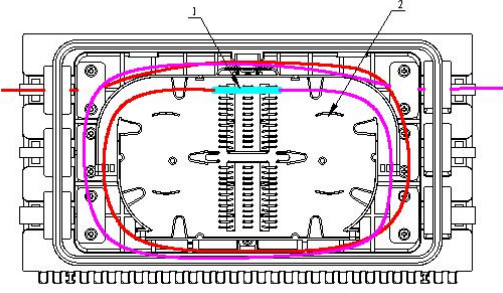
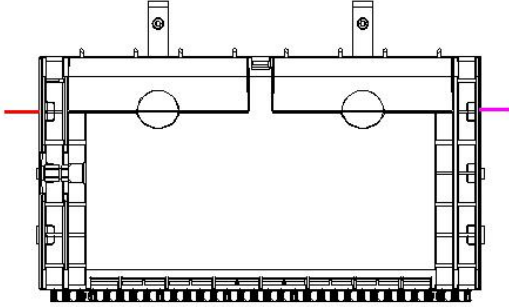
Item	Name	Specification	Max Qty
1	Screw 1	M4*25	2 pcs
2	Screw 2	M5*8	2 pcs
3	heat protect shrinkable sleeve	60mm*2.6*1.2	192 pcs
4	Nylon cable tie / black	3*120mm	20 pcs
5	Nylon cable tie / White	5*200mm	12 pcs
6	Plastic pipe	φ 5*0.6mm	1-2M

**Accessories picture :**



## MANUAL INSTRUCTIONS

**Instruction:**

<p>Step 1 .Open the closure, check and prepare the tools.</p>	<p>Step 2 .Wind the input and output cables into the box and reserve a suitable length. (suggestion length not less than 0.5M) .</p>
	 <p style="text-align: center;">1.Input cable      2.output cable</p>
<p>Step 3. let the input and output optical cables respectively go through the inlet port plastic block A, B and plastic pressure line card, then strip the optical cables.</p>	<p>Step 4: fix the input and output optical cables on the plastic press card.</p>
 <p>1.Inlet port adhesive block A 2. Inlet port adhesive block B 3. Plastic wire clamp</p>	 <p style="text-align: center;">1.Plastic wire clamp</p>
<p>Step 5. Fully splicing fusion the stripping cable and optical fiber heat-shrinkable sleeve, fixed on the splice tray.</p>	<p>Step 6. After test ok , install the cover and complete the assembly.</p>
 <p>1. Fiber heat-shrinkable sleeve      2. Fiber splice tray</p>	

## CH027 (36C-48C-72C)



CH027 (6).jpg



CH027 (7).jpg



CH027 (8).jpg



CH027 (9).jpg



CH027 (10).jpg



CH027 (11).jpg



CH027 (12).jpg



CH027 (13).jpg



CH027 (14).jpg



CH027 (15).jpg



CH027 (1).jpg



CH027 (2).jpg



CH027 (3).jpg



CH027 (4).jpg



CH027 (5).jpg